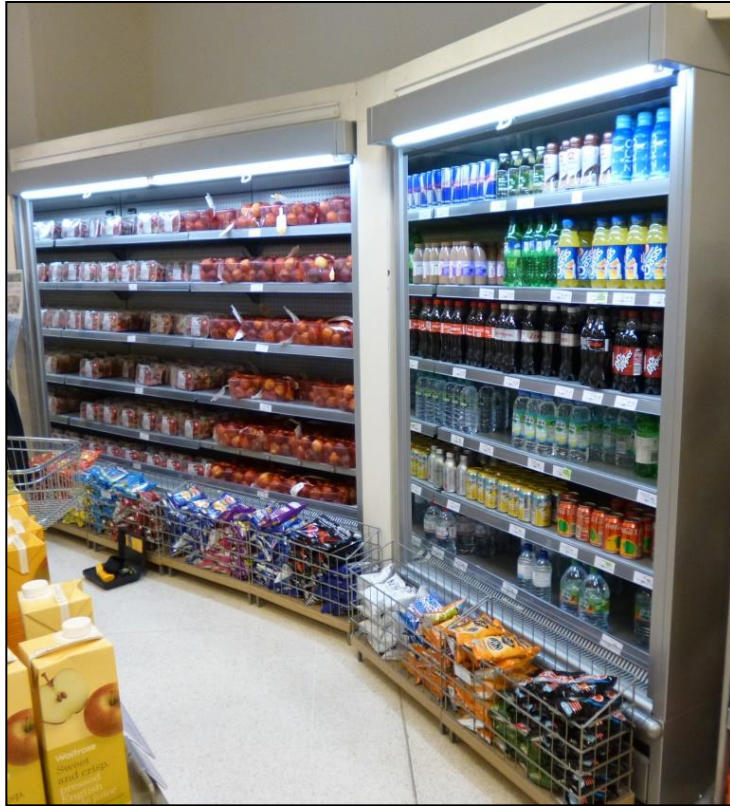


# Waitrose

## Wokingham Snacking Cabinets



**Cabinets are located in branch entrance area & fail to maintain correct temperatures.**

*Cabinets in question are 'Kingston' manufactured by Verco Ltd. These are standard chillers found throughout the Waitrose estate. Later models (as per this branch) are operating on hydrocarbon refrigerant*

*Air disturbance created by door openings & H&V vents in the surrounding area is believed to be cause of the poor cabinet performance.*

**To overcome this issue RJM have fitted double glazed frameless doors to both cabinets. The following pages show the features & benefits of the new door system**

Ryan-Jayberg Manufacturing  
Unit 18 Highnam Busin  
Newent Road  
Highnam  
Gloucester  
GL2 8DN



[www.ryan-jayberg.co.uk](http://www.ryan-jayberg.co.uk)

*Double glazed panels eliminate condensation in higher humidity conditions. Acrylic construction prevents 'glass shattering' potential*



*Retrofit to existing cases is a simple process. Hinge areas are easy to clean and require minimal maintenance.*



*Frameless double glazed acrylic door system maintains full vision into the cabinet & hence does not detract from merchandising impact.*

Ryan-Jayberg Manufacturing  
Unit 18 Highnam Busin  
Newent Road  
Highnam  
Gloucester  
GL2 8DN



RYAN - JAYBERG MANUFACTURING

[www.ryan-jayberg.co.uk](http://www.ryan-jayberg.co.uk)



**Original Cabinet**  
Includes traditional  
tube lighting &  
nightblind.



*Modifications include removal  
of standard canopy lamps &  
introduction of integrated  
LED lighting strips.  
A hydrocarbon safety system  
has also been fitted.*



**Modified Cabinet**  
Light tube &  
nightblind  
removed.

Ryan-Jayberg Manufacturing  
Unit 18 Highnam Busin  
Newent Road  
Highnam  
Gloucester  
GL2 8DN



[www.ryan-jayberg.co.uk](http://www.ryan-jayberg.co.uk)



*Doors hinge through 160° for easy product replenishment. Avoids door clashes in narrow aisles.*



*Integrated door handle, no protrusions or dirt traps.*

*Frameless design gives full vision into display area. Lightweight construction makes it possible to fit to many types of cases.*

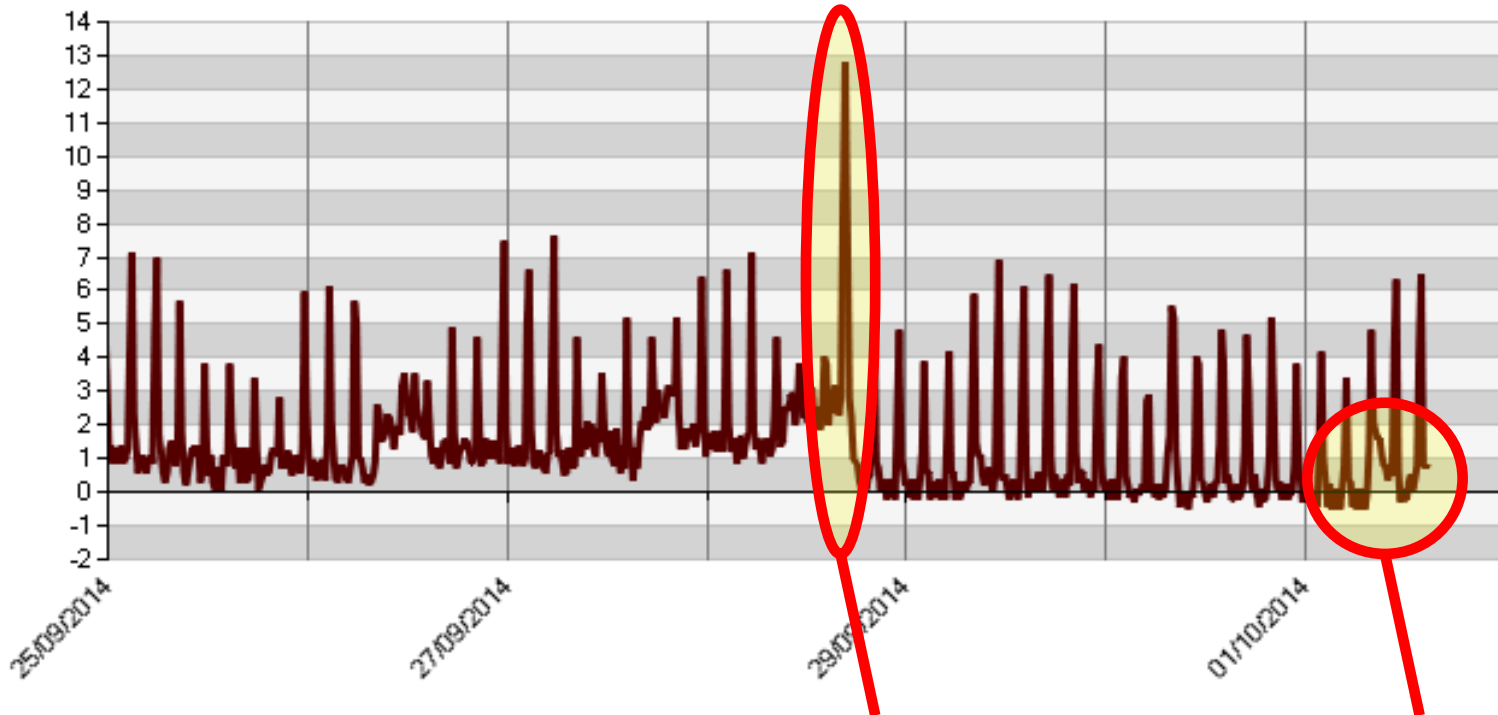


Ryan-Jayberg Manufacturing  
Unit 18 Highnam Business Park  
Newent Road  
Highnam  
Gloucester  
GL2 8DN



[www.ryan-jayberg.co.uk](http://www.ryan-jayberg.co.uk)

● System 902 (°C)



*Door installation.*

*Cabinet merchandised*

## ***Performance improvement.***

Ryan-Jayberg Manufacturing  
Unit 18 Highnam Busin  
Newent Road  
Highnam  
Gloucester  
GL2 8DN



**RYAN - JAYBERG MANUFACTURING**

[www.ryan-jayberg.co.uk](http://www.ryan-jayberg.co.uk)

# Waitrose

## Wokingham

**Verco  
Snacking  
Chillers**

**RJM door  
solution**



Ryan-Jayberg Manufacturing  
Unit 18 Highnam Busin  
Newent Road  
Highnam  
Gloucester  
GL2 8DN



**RYAN - JAYBERG MANUFACTURING**

[www.ryan-jayberg.co.uk](http://www.ryan-jayberg.co.uk)